

Note: All rights reserved. Specifications, terms and pictures on the catalogue are subject to change.  
Please consult us for more products information.

# BIOBASE®

## Specialist in Medical & Lab Freezers and Refrigerators



### BIOBASE Group

Biobase Biotech (Jinan) Co., Ltd  
Biobase Meihua Trading Co., Ltd  
Biobase Biodustry(Shandong) Co., Ltd

Add: No.51 South Gongye Road, Jinan, China

Tel: +86-531-81219803/01 Fax: +86-531-81219804

Email: [export@biobase.cn](mailto:export@biobase.cn)

Website: [www.biobase.cc](http://www.biobase.cc) [www.meihuatrade.com](http://www.meihuatrade.com)



Version 2017.6



# CERTIFICATES

## INTRODUCTION

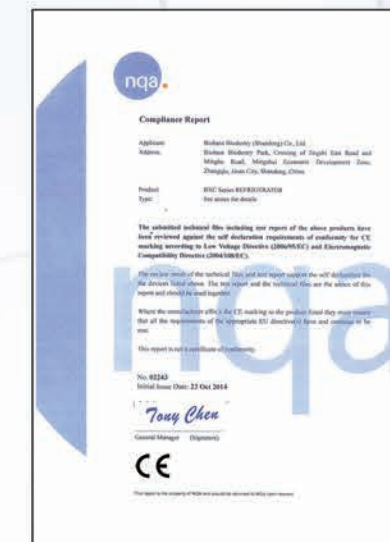
BIOBASE Group is a professional manufacturer of laboratory equipments since 1999. We are certified by CE, ISO13485, ISO14001, ISO9001, SGS, etc. Our main cold chain system products are Blood bank refrigerator, Medical refrigerator, -25°C Freezer, -40°C Freezer, Tuna Freezer, -86°C Ultra-low temperature Freezer, Freezer racks and boxes, Car refrigerator, Portable refrigerator, Freeze Dryer, Platelet incubator, Portable refrigerator, Ice maker. We have more than 1000 employees and 20000 square meters production base, our output per year is amount to 10000 units. Pursuing the highest quality is the tenet of BIOBASE.



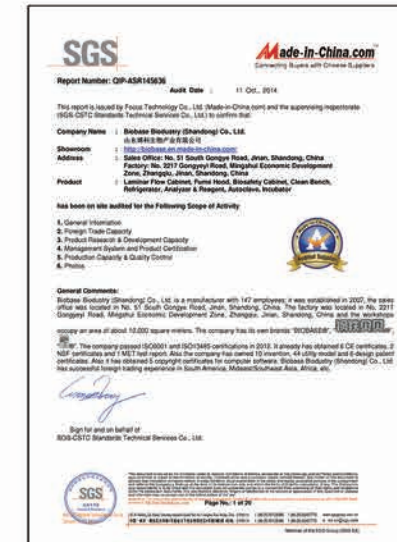
ISO14001



ISO13485



CE



SGS

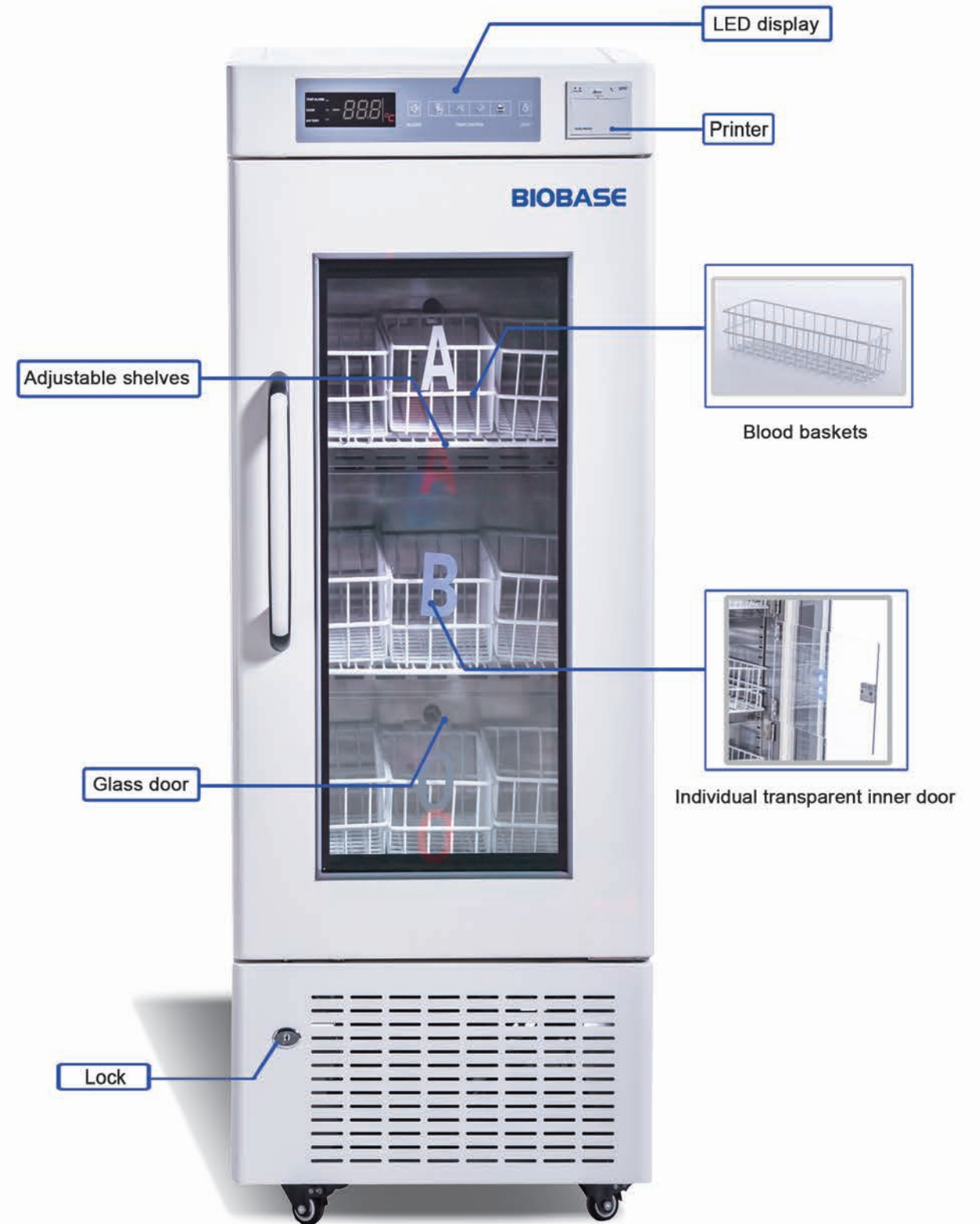




# CONTENT

	4°C Blood Bank Refrigerator-----	1
	2~8°C Medical Refrigerator-----	6
	-25°C Freezer-----	11
	-40°C Freezer-----	14
	Tuna Freezer-----	17
	-86°C Freezer-----	18
	Freezer Racks and Boxes-----	20
	Freeze Dryer-----	22
	Platelet Incubator-----	28
	Car Refrigerator-----	30
	Portable Refrigerator-----	31
	Ice Maker-----	32

# Blood Bank Refrigerator (4±1°C)





# Blood Bank Refrigerator



## ADVANTAGE

1. Multiple sensors design: make sure the precise monitoring and programming.
2. Foam-glass door, easy to observe, also keep a better cooling temperature.
3. Forced air refrigeration system, ensure inner temperature constant and uniform.
4. Adjustable shelves, improve space utilization; blood storage baskets can be classified.
5. Individual transparent inner door, effectively reduce cool air loss when opening the door.

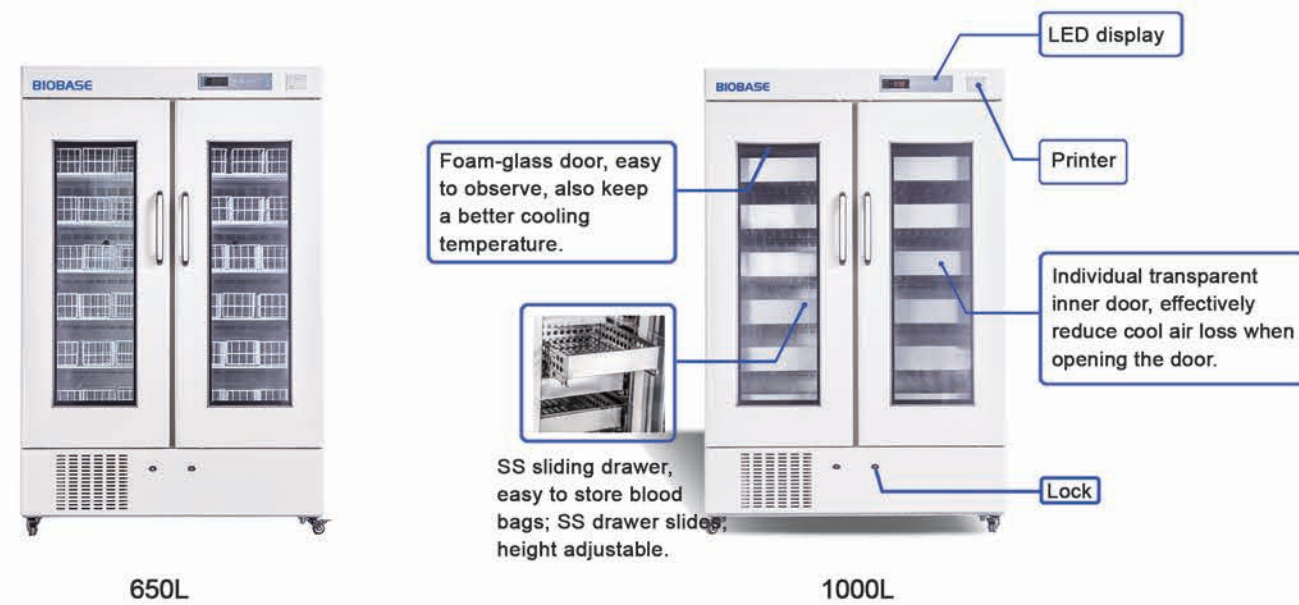


## TECHNICAL PARAMETERS

Model	BXC-V120B	BXC-V210B	BXC-V300B	BXC-V400B
Capacity	120L	210L	300L	400L
Temp. Range	4±1°C			
Temp. Accuracy	0.1°C			
Control System	Microprocessor control			
Display	Large screen LED display			
Alarm	Audio and visual alarm for: High or low temperature, Sensor failure, System failure, Door ajar, Power failure, Low battery			
Refrigeration Type	Forced air refrigeration system			
Refrigerant	R134a, CFC-Free			
Compressor	International famous compressor			
Condenser & Evaporator	High efficiency air-cooled condenser, made of copper			
Defrost	Auto defrost			
Construction	Unibody Design, Mono-assembly foaming (Rigid polyurethane insulation material)			
Material	Internal Material	Stainless steel	Stainless steel	Cold-rolled steel with anti-bacteria powder coating
	External Material	Cold-rolled steel with anti-bacteria powder coating		
Door	Double layer transparent glass door with lock, Heating film preventing frosting, Sealing joint strip with magnetic force. Transparent plastic inner door (only for model: BXC-V300B/V400B)			
Shelves	Adjustable shelves			
Casters	4 casters			
Consumption	160W	200W	403W	430W
Power Supply	AC220V±10%, 50/60Hz			
Standard Accessory	Temperature printer, 2 shelves, 6 baskets, fluorescent lamp	Temperature printer, 4 shelves, 12 baskets, fluorescent lamp	5 shelves, 15 baskets, fluorescent lamp	5 shelves, 20 baskets, fluorescent lamp
	Blood Bags (450ml)	66 pcs	132 pcs	210 pcs
External Size(W*D*H) mm	522*600*1050	522*600*1550	660*644*1960	750*761*1799
Package Size(W*D*H)mm	572*685*1200	572*685*1700	740*738*2159	854*852*1985
Gross Weight	55kg	75kg	155kg	192kg



# Blood Bank Refrigerator



650L

1000L

## TECHNICAL PARAMETERS

Model	BXC-V650B	BXC-V1000B
Capacity	650L	1000L
Temp. Range	4±1°C	
Temp. Accuracy	0.1°C	
Control System	Microprocessor control	
Display	Large screen LED display	
Alarm	Audio and visual alarm for: High or low temperature, Sensor failure, System failure; Door ajar, Power failure, Low battery	
Refrigeration Type	Forced air refrigeration system	
Refrigerant	R134a, CFC-Free	
Defrost	Auto defrost	
Construction	Unibody Design, Mono-assembly foaming (Rigid polyurethane insulation material)	
Material	Internal Material	Stainless steel
	External Material	Cold-rolled steel with anti-bacteria powder coating
Door	Three-ply transparent glass door with lock, Heating film preventing frosting, Sealing joint strip with magnetic force	
Drawers/Shelves	Adjustable shelves	SS drawers
Casters	4 casters	4 casters
Consumption	364W	600W
Power Supply	AC220V±10%, 50/60Hz	
Standard Accessory	Temperature printer, 12 shelves, 36 baskets, fluorescent lamp	Temperature printer, 12 drawers, fluorescent lamp
Blood Bags (450ml)	360 pcs	576 pcs
External Size(W*D*H) mm	1220*648*1885	1220*878*1885
Package Size(W*D*H) mm	1300*730*2080	1300*960*2080
Gross Weight	195kg	286kg

# Blood Bank Refrigerator (Economical Type)



130L



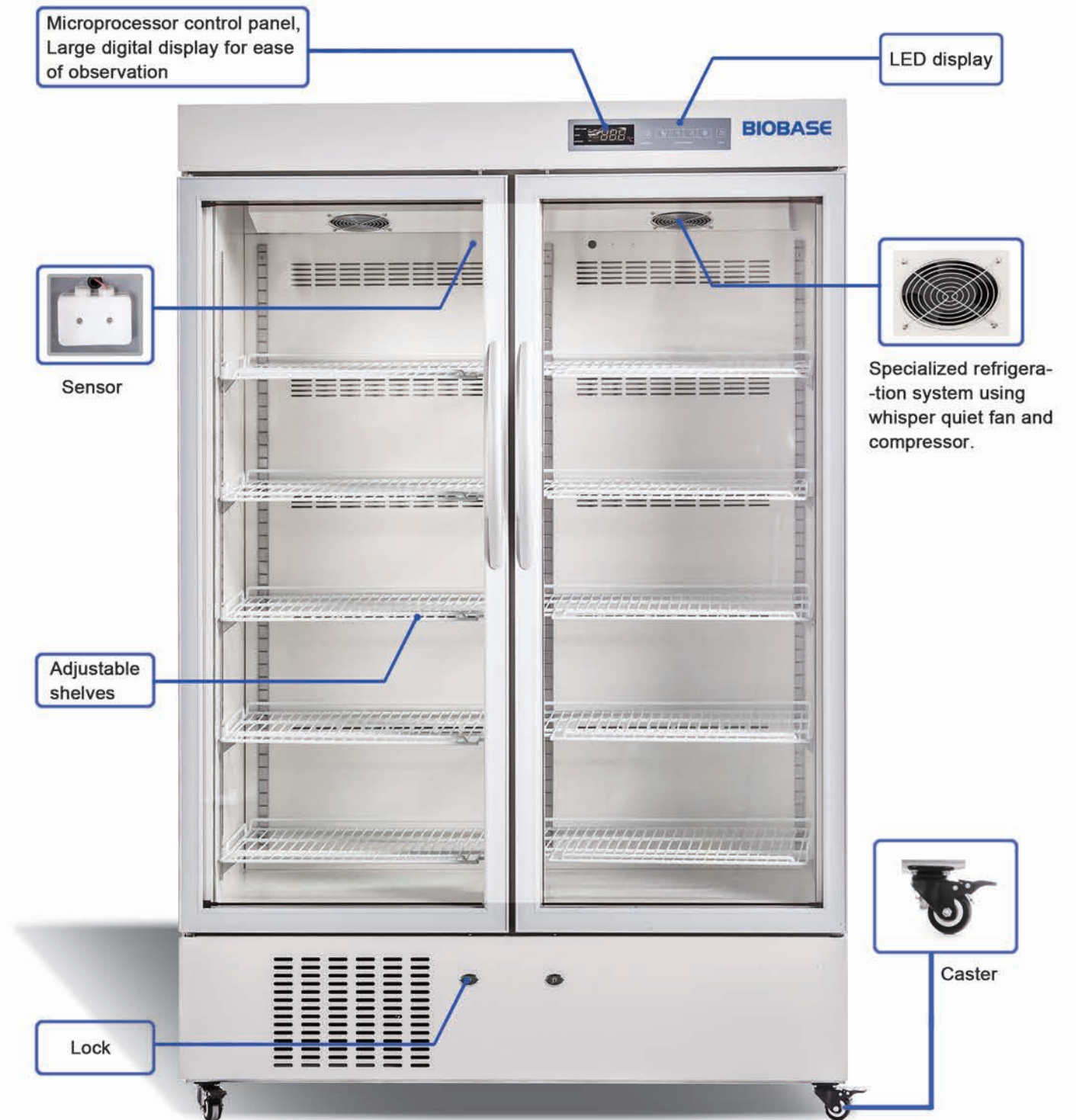
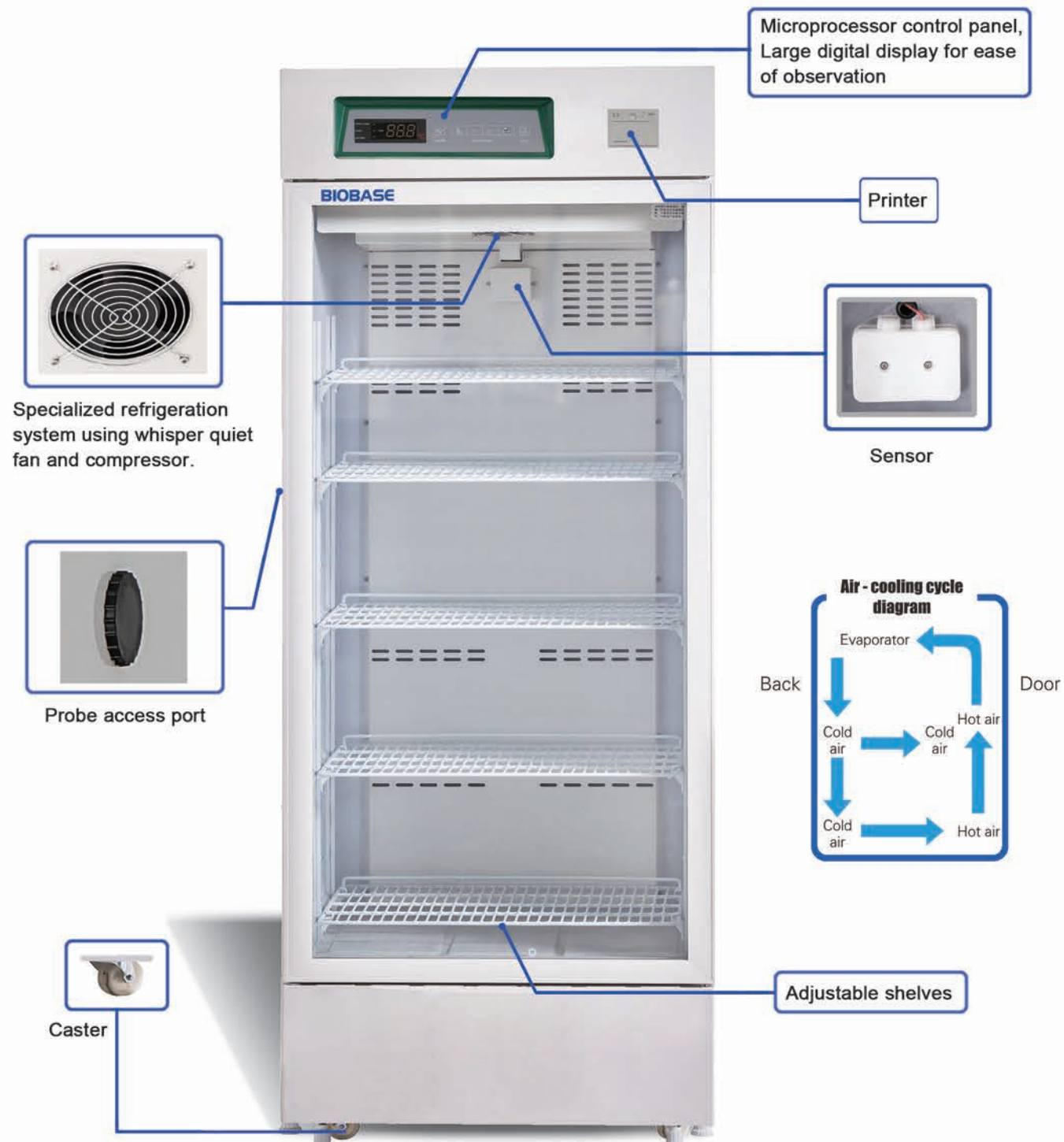
250L

## TECHNICAL PARAMETERS

Model	BXC-V130B	BXC-V250B
Capacity	130L	250L
Temp. Range	4±1°C	
Temp. Accuracy	0.1°C	
Control System	Microprocessor control	
Display	Large screen LED display	
Alarm	Audio and visual alarm for: High or low temperature; System failure; Door ajar; Power failure Sensor error (only for model BXC-V130B)	
Refrigeration Type	Forced air refrigeration system	
Refrigerant	R134a, CFC-Free	R404a, CFC-Free
Defrost	Auto defrost	
Construction	Unibody Design, Mono-assembly foaming (Rigid polyurethane insulation material)	
Material	Internal Material	Aluminium
	External Material	Stainless steel
Door	Three-ply transparent glass door with lock, Heating film preventing frosting Sealing joint strip with magnetic force	
Shelves	Adjustable shelves made of PVC coated wire	SS drawers
Casters	/	4 casters
Consumption	120W	350W
Power Supply	AC220V±10%, 50/60Hz	
Standard Accessory	4 shelves, 8 baskets, fluorescent lamp	Digital temperature recorder, 6 drawers fluorescent lamp
Blood Bags (450ml)	64 pcs	120 pcs
External Size (W*D*H) mm	500*550*1300	570*530*1600
Package Size (W*D*H) mm	560*610*1360	700*660*1800
Gross Weight	90kg	140kg



# Medical Refrigerator (2 - 8°C)





# Medical Refrigerator



Foam Door (F)



Glass Door (G)



260L



360L

## TECHNICAL PARAMETERS

Model	BXC-V50M (F/G)	BXC-V70M (F/G)	BXC-V95M (F/G)	BXC-V130M (F/G)
External Size(W*D*H) mm	450*445*575	470*445*700	470*445*900	515*510*900
Inernal Size(W*D*H) mm	382*359*415	400*347*528	400*347*708	419*395*738
Capacity	50L	70L	95L	130L
Temperature Range	2°C~8°C			
Temperature Accuracy	0.1°C			
Control System	Microprocessor Control, Large Screen LED Display			
Alarm	Standard: Audible and Visual alarm for High and low Temperature Alarm, Sensor Failure Alarm; Optional: Audible and Visual alarm for Power Failure alarm & Door Ajar Alarm			
Refrigeration Type	Forced air refrigeration system			
Refrigerant	R134a, CFC Free			
Condenser & Evaporator	High efficiency air-cooled condenser, made of copper			
Defrost	Auto defrost			
Door	Foam/Glass			
Construction	Structure	Unibody design & Mono-assembly foaming (Rigid polyurethane insulation material)		
	Internal Material	HIPS blister tank		
	External Material	Cold-rolled steel coated with anti-bacteria powder coating		
Baskets	1 pc	2 pcs	3 pcs	3 pcs
Consumption	60W	70W	70W	90W
Power Supply	AC220V±10%, 50/60Hz			
Package Size(W*D*H) mm	510*494*610	524*507*735	524*507*945	576*585*930
Gross Weight	18.5kg(F) / 20.5kg(G)	25.5kg(F) / 29.5kg(G)	30kg(F) / 36kg(G)	34kg(F) / 40kg(G)

## TECHNICAL PARAMETERS

Model	BXC-V260M	BXC-V360M
External Size(W*D*H) mm	635*540*1900	655*660*1980
Capacity	260L	360L
Temp. Range	2°C~8°C	
Temp. Accuracy	0.1°C	
Control System	Microprocessor Control, Large Screen LED Display	
Alarm	Audible and visual alarm for: High and low temperature, System & sensor failure, Door ajar, Power failure alarm, Low backup battery alarm.	
Refrigeration Type	Forced air refrigeration system	
Refrigerant	R134a, CFC Free	
Condenser & Evaporator	Bundy tube condenser	
Defrost	Frostless design	
Construction	Structure	Unibody design & mono-assembly foaming (Rigid polyurethane insulation material)
	Internal material	HIPS engineering plastics, abrasion and acid resistant
	External material	Cold-rolled steel coated with anti-bacteria powder
Shelf	Adjustable shelves made of high quality steel wire	
	4 pcs	5 pcs
Consumption	200W	350W
Power Supply	AC220V±10%, 50/60Hz	
Standard Accessory	LED lamp & shelves, printer, probe access port, door keys	
Package Size(W*D*H) mm	688*690*2100	708*720*2132
Gross Weight	107kg	116kg



# Medical Refrigerator



## TECHNICAL PARAMETERS

Model	BXC-V650M	BXC-V1000M	BXC-V1500M
External Size(W*D*H) mm	1220*642*1885	795*1225*1980	1800*750*1965
Capacity	650L	1000L	1500L
Temp. Range	2°C~8°C		
Temp. Accuracy	0.1°C		
Control System	Microprocessor Control & Large Screen LED Display		
Alarm	Audible and visual alarm for: High and low temperature, System & sensor failure, Door ajar, Power failure alarm		
Refrigeration Type	Forced air refrigeration system		
Refrigerant	R600a	R134a, CFC Free	
Condenser&Evaporator	High efficiency air-cooled condenser, made of copper		
Defrost	Auto defrost		
Construction	Structure	Unibody design & Mono-assembly foaming (rigid polyurethane insulation material)	
	Internal Material	Cold-rolled steel coated with anti-bacteria powder	SS304
	External Material	Cold-rolled steel coated with anti-bacteria powder	SS304
Shelf	Adjustable shelves made of high quality steel wire		
	10 pcs	12 pcs	12 pcs
Consumption	443W	510W	650W
Power Supply	AC220V±10%, 50/60Hz		
Standard Accessory	Fluorescent lamp, shelves, door keys (BXC-V1000M with LED lamp, probe access port and printer)		
Package Size(W*D*H) mm	695*1290*1940	820*1285*2020	1940*880*2035
Gross Weight	188kg	245kg	190kg

# -25°C Freezer



## FEATURES

1. Digital temperature display.
2. EPS(Emergent power supply) is optional.
3. The safety lock can prevent random opening.
4. Baskets made of steel wire are convenient to store articles.
5. Round corner design of doors and the body provides luxury and elegance.
6. Delayed start and safe stop interval between restart and being terminated, ensure reliable running.

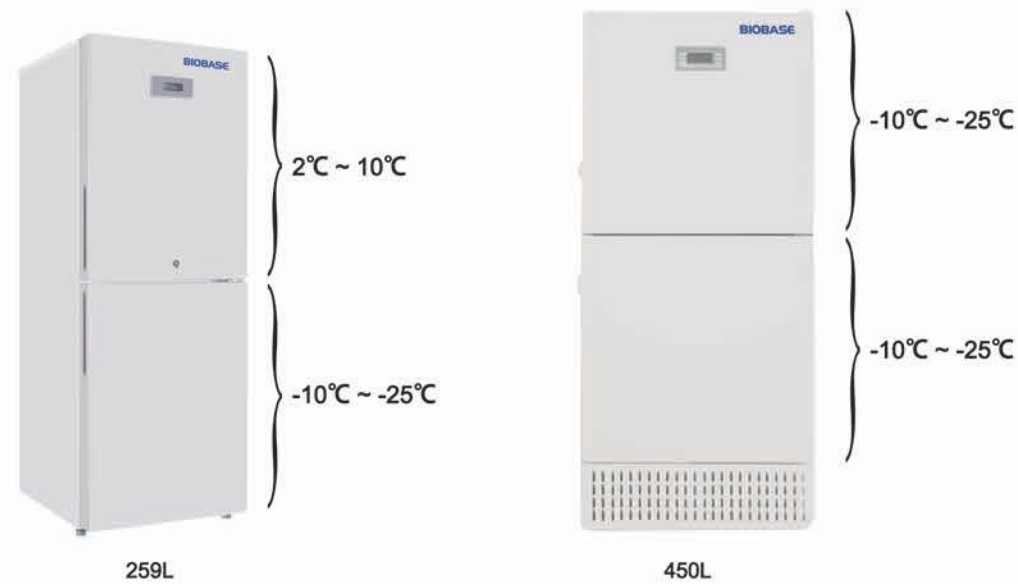


## TECHNICAL PARAMETERS

Model	BDF-25H150	BDF-25H200	BDF-25H300	BDF-25H389	BDF-25H525
External Size(W*D*H) mm	696*570*850	865*570*850	1098*617*850	1309*705*874	1843*689*848
Capacity	150L	200L	300L	389L	525L
Temp. Range	-10°C~-25°C				
Temp. Accuracy	0.1°C(when the temperature is -10°C~-20°C), 1°C(when the temperature is -20°C~-25°C)				
Control System	Microprocessor Control & LED display				
Alarm	High and low temperature;			High or low temperature alarm,	
	Door ajar alarm; Condenser fault alarm;			temperature sensor failure alarm	
	Power failure alarm; Temperature control fault alarm.				
Refrigeration Type	Direct refrigeration				
Refrigerant	R600a/R134a, CFC Free			R600a, CFC Free	
Condenser&Evaporator	Internal-mounted condenser and coil type evaporator				
Construction	Structure	Whole foaming, freon cyclopentane / isopentane high density polyurethane foam			
	Internal Material	Aluminum			
	External Material	Cold-rolled steel coated with anti-bacteria powder			
Basket	1 pc	2 pcs	2 pcs	1 pc	1 pc
Consumption	95W	100W	120W	135W	270W
Power Supply	AC220V±10%, 50/60Hz				
Package Size(W*D*H)mm	745*655*875	914*655*875	1160*745*875	1385*777*951	1920*777*970
Gross Weight	34kg	37.5kg	49kg	68kg	99kg



# -25°C Freezer



## TECHNICAL PARAMETERS

Model	BDF-25V259	BDF-25V450
External Size(W*D*H) mm	640*578*1685	655*780*1845
Capacity	Upper refrigerator: 157L Down freezer: 102L	Upper freezer: 225L Down freezer: 225L
Type	Vertical	
Temp. Range	Upper: 2°C~10°C Down: -10°C~-25°C	Upper: -10°C~-25°C Down: -10°C~-25°C
Temp. Accuracy	Refrigerator: 0.1°C, Freezer: 1°C	0.1°C
Control System	Microprocessor control	
Alarm	High or low temperature alarm, sensor failure alarm, open-door alarm	
Refrigeration Type	Direct refrigeration	
Refrigerant	R134a, CFC free	
Condenser&Evaporator	High efficiency air-cooled condenser	
Construction	Structure	Unibody design; Mono-assembly foaming(Rigid polyurethane insulation material)
	Internal Material	ABS Material
	External Material	Cold-rolled steel coated with anti-bacteria powder.
Shelf/Drawer	3 toughened glass shelves/4 drawers	6 plastic drawers/6 plastic drawers
Consumption	135W	400W
Power Supply	AC220V±10%, 50/60Hz	
Package Size(W*D*H) mm	643*712*1800	762*842*2066
Gross Weight	82kg	122kg

## TECHNICAL PARAMETERS

Model	BDF-25V268	BDF-25V270	BDF-25V328
External Size(W*D*H) mm	675*675*1580	580*600*1750	675*675*1850
Capacity	268L	270L	328L
Type	Vertical		
Temp. Range	-10°C~-25°C		
Temp. Accuracy	0.1°C	1°C	0.1°C
Control System	Microprocessor Control & LED Display (Except model BDF-25V270 is LCD display)		
Alarm	High and low temperature; System & sensor failure; Door ajar; Power failure alarm		
Refrigeration Type	Direct Refrigeration		
Refrigerant	R404a, CFC Free	R134a, CFC Free	R404a, CFC Free
Compressor	International famous compressor		
Condenser&Evaporator	High efficiency air-cooled condenser, made of copper		
Construction	Structure	Unibody Design & Mono-assembly foaming (Rigid polyurethane insulation material)	
	Internal Material	Cold-rolled steel coated with anti-bacteria powder for BDF-25V268 and BDF-25V328, ABS material for BDF-25V270	
	External Material	Cold-rolled steel coated with anti-bacteria powder	
Shelf/Drawers	3 shelves	7 drawers	4 shelves
Consumption	390W	130W	485W
Power Supply	AC220V±10%, 50/60Hz		
Package Size(W*D*H) mm	735*755*1635	694*651*1830	735*735*1900
Gross Weight	125kg	75kg	140kg



# -40°C Freezer



## TECHNICAL PARAMETERS

Model	BDF-40V253	BDF-40V288A	BDF-40V525	BDF-40V450
External Size(W*D*H) mm	623*604*1775	737*780*1860	880*855*1912	660*780*1850
Capacity	Upper refrigerator: 154L Down freezer: 99L	Upper refrigerator: 188L Down freezer: 100L	Upper freezer: 262.5L Down freezer: 262.5L	Upper freezer: 225L Down freezer: 225L
Type	Vertical			
Temp. Range	Upper: 2°C~10°C Down: -25°C~-40°C	Upper: 2°C~8°C Down: -10°C~-40°C	-20°C~-40°C	-10°C~-40°C
Temp. Accuracy	0.1°C			
Control System	Microprocessor Control			
	LCD Display	LED Display	LCD Display	
Alarm	High or low temperature alarm, temperature sensor failure alarm, open door alarm			
Refrigeration Type	Direct Refrigeration			
Refrigerant	R507a, CFC-Free	R404a, CFC-Free	R507a, CFC-Free	
Condenser&Evaporator	High effective air-cooled condenser, made of copper	Internal-mounted condenser and coil type evaporator, material is single wall tube		High effective air-cooled condenser, made of copper
Construction	Structure	Unibody Design & Mono-assembly foaming (Rigid polyurethane insulation material)		
	Internal Material	ABS plate	Cold-rolled steel with anti-bacteria powder coating	ABS plate
	External Material	Cold-rolled steel with anti-bacteria powder coating		
Drawer/Shelf	Upper: 3 adjustable shelves Down: 3 drawers		Upper: 6 drawers Down: 4 drawers	Upper: 6 drawers Down: 6 drawers
Consumption	400W	430W	310W	650W
Power Supply	AC220V±10%, 50/60Hz			
Package Size(W*D*H) mm	820*805*1990	815*850*2070	976*923*2057	860*980*2050
Gross Weight	77kg	175kg	220kg	145kg

## TECHNICAL PARAMETERS

Model	BDF-40V90	BDF-40V270	BDF-40V268	BDF-40V328
External Size(W*D*H) mm	623*544*842	620*600*1750	673*676*1630	673*676*1860
Capacity	90L	270L	268L	328L
Type	Vertical			
Temp. Range	-10°C~-40°C		-30°C~-40°C	
Temp. Accuracy	1°C			
Control System	Microprocessor Control, LCD Display			
Alarm	High and low temperature; System & sensor failure; Door ajar; Power failure alarm			
Refrigeration Type	Direct Refrigeration			
Refrigerant	R507a, CFC Free			
Compressor	International famous compressor			
Condenser&Evaporator	Made of copper			
Construction	Structure	Unibody Design & Mono-assembly foaming (Rigid polyurethane insulation material)		
	Internal Material	Color sprayed steel for model BDF-40V268/328, Aluminum for model BDF-40V90/270		
	External Material	Cold-rolled steel coated with anti-bacteria powder coating		
Door	Door with key lock			
Drawer/Shelf	4 drawers	7 drawers	4 shelves	5 shelves
Consumption	120W	320W	593W	613W
Power Supply	AC220V±10%, 50/60Hz			
Package Size(W*D*H) mm	670*620*930	750*651*1950	735*735*1635	735*755*1900
Gross Weight	41kg	85kg	125kg	140kg



# -40°C Freezer



## TECHNICAL PARAMETERS

Model	BDF-40H100	BDF-40H200	BDF-40H300	BDF-40H390	BDF-40H485
External Size(W*D*H) mm	575*500*835	861*570*850	1098*617*850	1412*710*838	1695*805*955
Capacity	100L	200L	300L	390L	485L
Temp. Range	-10°C~-40°C				-30°C~-40°C
Temp. Accuracy	0.1°C				
Control System	Microprocessor Control, LED Display				
Alarm	High or low temperature alarm, system & sensor failure alarm; condenser failure alarm; Door ajar; Power failure alarm				
Refrigeration Type	Direct Refrigeration				
Refrigerant	R404a, CFC-free			R507a, CFC Free	
Condenser&Evaporator	Made of copper(except BDF-40H390, which material is steel)				
Construction	Structure	Unibody Design & Mono-assembly foaming (Rigid polyurethane insulation material)			
	Internal Material	Aluminum			
	External Material	Cold-rolled steel coated with anti-bacteria powder			
Baskets	1 pc	2 pcs			
Consumption	120W	200W	230W	425W	295W
Power Supply	AC220V±10%, 50/60Hz				
Package Size(W*D*H) mm	620*570*880	914*655*875	1160*745*875	1488*790*945	1750*925*1050
Gross Weight	29.5kg	37.5kg	50kg	85kg	160kg

# Tuna Freezer (-60°C Freezer)



58L



118L / 218L / 318L



458L

## SAFETY SYSTEM

1. Perfect alarm system with buzzer sound and lamp flashing alarm functions
2. High and low temperature alarm, sensor fault alarm function are available
3. Multiple-protection function (Password protection, power-on delay, time between stops, refrigeration system operation protection during sensor failure)

## TECHNICAL PARAMETERS

Model	BDF-60H58	BDF-60H118A	BDF-60H218	BDF-60H318	BDF-60H458
External Size(W*D*H) mm	600*680*920	900*750*920	1160*750*860	1530*750*860	2110*885*1095
Internal Size(W*D*H) mm	400*400*360	700*470*350	860*470*570	1330*470*570	1380*500*660
Capacity	58L	118L	218L	318L	458L
Temp. Range	-25°C ~ -60°C, adjustable				
Temp. Accuracy	0.1°C				
Control System & Display	Microprocessor control, LED display				
Audio & Visual Alarm	Height and low temperature alarm & Temperature sensor failure alarm				
Refrigeration Type	Optimized auto-cascade refrigerating system				
Refrigerant	Unique fluoride-free mixed refrigerant, CFC-Free				
Condenser & Evaporator	Optimized evaporation and condensation system, strong cooling and low energy consumption				
Construction	structure	150mm ultra-thick foam layer, dual-sealing design of door, for effective temperature protection.			
	Internal Material	304 Stainless Steel			
	External Material	Cold-rolled steel with anti-bacteria powder coating			
Consumption	300W	450W	550W	720W	780W
Power Supply	AC220V±10%, 50/60Hz				
Package Size(W*D*H) mm	690*760*1130	940*810*1050	1250*810*1000	1660*810*1000	2200*915*1210
Gross Weight	110kg	120kg	130kg	240kg	280kg



# -86°C Freezer



158L



340L



936L



100L



398L



540L

## TECHNICAL PARAMETERS

Model	BDF-86V158	BDF-86V340	BDF-86V936
External Size(W*D*H) mm	700*700*1580	855*1006*1917	1240*1000*2000
Internal Size(W*D*H) mm	460*455*800	490*607*1140	1000*700*1335
Capacity	158L	340L	936L
Type	Vertical		
Temp. Range	-40 ~ -86°C	-60 ~ -86°C	-40 ~ -86°C
Temp. Accuracy	0.1°C		
Control System	Microprocessor control, LED Display		
Audible and Visual Alarm	High and low temperature, Sensor failure	High and low temperature, Sensor failure, Door ajar, Power failure, Voltage abnormal, Ambient temperature abnormal, Low voltage, Filter blocking	
Refrigeration type	Direct refrigeration		
Refrigerant	Mixture refrigerant		
Compressor	1 set	2 sets	2 sets
Condenser&Evaporator	Made of copper		
Construction	Structure	Unibody design & Mono-assembly foaming (Rigid polyurethane insulation material)	
	Internal Material	SS 304	
	External Material	Cold-rolled steel with anti-bacteria powder coating	
Door	Lockable door		
Caster	4 casters		
Chamber with Inner Door	3	4	4
Shelf	2 pcs	3 pcs	3 pcs
Temp. Test Port	1, φ30mm	2, φ25mm	1, φ18mm
Consumption	650W	1200W	1600W
Power Supply	AC220V±10%, 50/60Hz		
Standard Accessory		72 hours battery backup for power failure alarm	
Optional Storage Racks and Boxes		12 racks: 4*4	24 racks: 5*5
		192 Boxes	600 Boxes
Package Size (W*D*H) mm	780*800*1710	935*1070*2128	1350*1080*2150
Gross Weight	155kg	220kg	330kg

## TECHNICAL PARAMETERS

Model	BDF-86V100	BDF-86V540	BDF-86V398
External Size(W*D*H) mm	1000*720*793	840*918*1984	785*1064*1959
Internal Size(W*D*H) mm	450*450*500	Upper: 695*600*588 Down: 695*600*588	440*696*1266
Capacity	100L	540L	398L
Type	Vertical		
Temp. Range	-10 ~ -86°C		
Temp. Accuracy	0.1°C		
Control System	Microprocessor control, Large Screen LED Display		Microprocessor control, LCD touch screen
Audio and Visual Alarm	High and low temperature, System failure, Door ajar, Sensor failure, Low voltage, Filter blocking; Power failure(only for BDF-86V100 and BDF-86V540)		
Refrigeration Type	Direct refrigeration		
Refrigerant	Mixture refrigerant		
Compressor	1 set	2 sets	1 set
Condenser&Evaporator	Made of copper		
Construction	Structure	Unibody design, two-time foaming technology, 100~155mm foaming insulation, with VIP+	
	Internal Material	SS304	
	External Material	Cold-rolled steel coated with anti-bacteria powder	
Door	Lockable door		
Caster	4 casters		
Chamber with Inner Door	2	4	4
Temp. Test Port	1, φ40mm	1, φ40mm	2, φ40mm
Consumption	800W	1800W	1000W
Power Supply	AC220V±10%, 50/60Hz		
Standard Accessory	Temperature printer, record 7 days data, 72 hours battery backup for printer and controller display		USB port
Optional Accessory	Back-up System	CO <sub>2</sub> Back-up system	
	Storage Racks and Boxes	3 racks: 4*3 3 racks: 3*3 63 Boxes	8 racks: 5*5 8 rack: 4*5 360 Boxes
Package Size(W*D*H) mm	1220*890*1010	990*1100*2230	850*1122*2062
Gross Weight	140kg	360kg	360kg

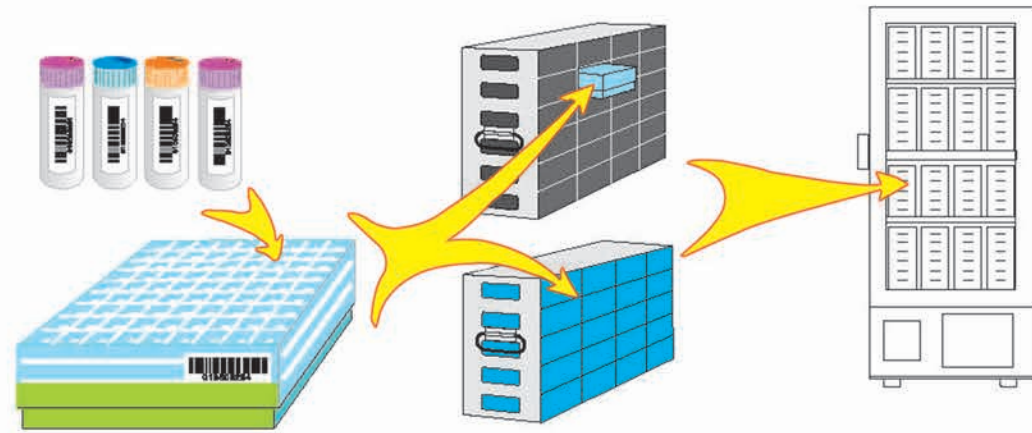


# Freezer Racks and Boxes



## TECHNICAL PARAMETERS

Name	Model	Specification	Dimension(W*D*H)mm	Capacity	Material
Racks	R255A	For 2 inch box, side type; 5 layer*5 row	137*692*292	25 units boxes 2"	SS 304
Racks	R255B	For 2 inch box, drawer type; 5 layer*5 row	142*693*290	25 units boxes 2"	SS 304
Racks	R335A	For 3 inch box, side type; 3 layer*5 row	137*692*260	15 units boxes 3"	SS 304
Racks	R335B	For 3 inch box, drawer type; 3 layer*5 row	142*693*262	15 units boxes 3"	SS 304
Racks	R254A	For 2 inch box, side type; 5 layer*4 row	137*555*292	20 units boxes 2"	SS 304
Racks	R254B	For 2 inch box, drawer type; 5 layer*4 row	142*556*290	20 units boxes 2"	SS 304
Racks	R244A	For 2 inch box, side type; 4 layer*4 row	137*555*234	16 units boxes 2"	SS 304
Racks	R244B	For 2 inch box, drawer type; 4 layer*4 row	142*556*233	16 units boxes 2"	SS 304
Racks	R334A	For 3 inch box, side type; 3 layer*4 row	137*555*260	12 units boxes 3"	SS 304
Racks	R334B	For 3 inch box, drawer type; 3 layer*4 row	142*556*262	12 units boxes 3"	SS 304
Racks	R253A	For 2 inch box, side type; 5 layer*3 row	137*418*292	15 units boxes 2"	SS 304
Racks	R253B	For 2 inch box, drawer type; 5 layer*3 row	142*419*290	15 units boxes 2"	SS 304
Racks	R11	For 2 inch box, hike type; 11 layer	140*147*630	11 units boxes 2"	SS 304
Racks	R8	For 2 inch box, hike type; 8 layer	140*147*462	8 units boxes 2"	SS 304
Racks	R10	For 2 inch box, hike type; 10 layer	140*147*574	10units boxes 2"	SS 304



Material of Box:ABS  
Size: 2"



Material of Box:Paper Characteristics  
Size: 3"



**Note:**  
"A" means side type rack; "B" means drawer type rack;



# Freeze Dryer

## Tabletop & Vertical Freeze Dryer

### INTRODUCTION

The lab series freeze dryer is suitable for freeze drying test of laboratory biomedical samples. Widely used in drugs, biological products, chemical and food industries. On the heat-sensitive substances such as antibiotics, vaccines, blood products, hormones and other biological tissue enzymes, freeze-drying technology is applied.

### FEATURES

1. LCD touch screen.
2. With historical data inquiry function.
3. With USB interface to export the data.
4. Large capacity ice condenser trap and without coil inside.
5. With cascade refrigeration technology.
6. Pre-freezing shelf can be used as guide barrel to speed up the drying rate.
7. Ice condenser trap and operation panel are made by stainless steel.
8. Drying chamber is transparent which is visual and safe.
9. Shelves are stainless steel, which can be adjustable per the requirements.

### ACCESSORIES



## Pilot Freeze Dryer

### INTRODUCTION

Biobase series pilot vacuum freeze dryer is suitable for laboratory samples of freeze drying test, pilot use, and a small amount of production.

### FEATURES

1. Pre-freezing and drying are in same place.
2. With cascade refrigeration technology.
3. Silicon oil is intermediate medium in the shelves for heating to ensure drying material uniformity.
4. Shelf temperature is adjustable and easy to control.
5. Tray is easy to operate and clean.
6. 7 inch LCD touch screen. Adopt PID intelligent control system.
7. With historical data inquiry function, can store history data for one month.
8. Equipped with USB interface on control panel. It can copy the data and history data directly without additional software.
9. Ice condenser and operation panel are made by stainless steel, corrosion-resistant and easy to clean.
10. Front door is with high transparent colorless organic glass, the test process can be easily observed.

### ACCESSORIES



## Tabletop Freeze Dryer



### TECHNICAL PARAMETERS

Model	BK-FD10S	BK-FD10P	BK-FD10T	BK-FD10PT
Type	Standard chamber	Standard chamber with 8 port manifold	Stopping chamber	Standard stopping chamber with 8 port manifold
Freeze Drying Area	0.12m <sup>2</sup>		0.09m <sup>2</sup>	
Tray	4 pcs		3 pcs	
Height Between Trays	50mm		68mm	
Cold Trap Temperature	≤-56℃			
Cold Trap Capacity	9.5L			
Cold Trap Size(D*H)	Φ215*260mm			
Vacuum Degree	<10Pa			
Water Capture Capacity	3kg/24h			
Tray Size(D*H)	Φ200*20mm			
Freeze Drying Time	24h			
Loading Capacity/Shelf(Liquid)	0.3L			
Total Loading Capacity(Liquid)			0.9L	
Drying Chamber Size(D*H)	Φ260*310mm	Φ260*450mm	Φ260*450mm	
Total Qty. Of Vial Φ22	260		195	
Total Qty. Of Vial Φ16	480		360	
Total Qty. Of Vial Φ12	920		690	
Refrigerant	R600a+R290+R23			
Cooling System	Air cooling			
Consumption	0.9KW			
Power Supply	AC220V/50Hz, 60Hz(single phase); 110V/60Hz(single phase)			
Standard Accessory	Vacuum pump 2L/S, 8m <sup>3</sup> /h (for all models), Flasks 500mlx8 (only for model BK-FD10P/PT)			
Optional Function & Accessory	Tray heating (for all models), Cold trap defrosting (for all models), Conical-mouth flask 100ml, 250ml, 500ml, 1000ml (for BK-FD10P/PT), Wide-mouth flask 800ml (for BK-FD10P/10PT)			
External Size(W*D*H) mm	582*625*495/945mm			
Package Size	Main Body	670*660*610 / 70kg		670*660*610 / 70kg
(W*D*H) mm /	Drying Chamber	300*300*350 / 10kg		350*350*570 / 9kg
Gross Weight	Vacuum Pump	590*380*220 / 22kg		590*380*220 / 22kg



## Vertical Freeze Dryer



BK-FD12S



BK-FD12P



BK-FD12T



BK-FD12PT

### TECHNICAL PARAMETERS

Model	BK-FD12S(-55/-80)	BK-FD12P(-55/-80)	BK-FD12T(-55/-80)	BK-FD12PT(-55/-80)
Type	Standard chamber	Standard chamber with 8 port manifold	Stoppering chamber	Standard stoppering chamber with 8 port manifold
Freeze Drying Area	0.12m <sup>2</sup>		0.09m <sup>2</sup>	
Tray	4 pcs		3 pcs	
Height Between Trays	50mm		68mm	
Cold Trap Temperature	≤-56°C/-80°C			
Cold Trap Capacity	9.5L			
Cold Trap Size(Dr*H)	Φ215*260mm			
Vacuum Degree	<10Pa			
Water Capture Capacity	3kg/24h			
Tray Size (D*H)	Φ200*20mm			
Freeze Drying Time	24h			
Loading Capacity/Shelf(Liquid)	0.3L			
Total Loading Capacity(Liquid)	1.2L		0.9L	
Drying Chamber Size(D*H)	Φ260*310mm	Φ260*450mm	Φ260*450mm	
Total Qty. Of Vial Φ22	260		195	
Total Qty. Of Vial Φ16	480		360	
Total Qty. Of Vial Φ12	920		690	
Refrigerant	R600a+R290+R23			
Cooling System	Air cooling			
Consumption	-55°C: 0.9kW, -80°C: 1.5kW			
Power Supply	AC220V/50Hz, 60Hz(single phase), 110V/60Hz(single phase)			
Standard Accessory	Vacuum pump 2L/S, 8m <sup>3</sup> /h (for all models), Flasks 500mlx8 (only for model BK-FD12P/PT)			
Optional Function & Accessory	Tray heating (for all models), Cold trap defrosting (for all models), Conical-mouth flask 100ml, 250ml, 500ml, 1000ml (for BK-FD12P/PT), Wide-mouth flask 800ml (for BK-FD12P/12PT)			
External Size(W*D*H) mm	460*620*920/1370			
Package Size Main Body	1000*700*570 / 90kg	1000*700*570 / 90kg		
(W*D*H)mm / Drying Chamber	300*300*350 / 12kg	350*350*570 / 12kg		
Gross Weight Vacuum Pump	590*380*220 / 22kg	590*380*220 / 22kg		



BK-FD18S



BK-FD18P



BK-FD18T



BK-FD18PT

### TECHNICAL PARAMETERS

Model	BK-FD18S(-55/-80)	BK-FD18P(-55/-80)	BK-FD18T(-55/-80)	BK-FD18PT(-55/-80)
Type	Standard chamber	Standard chamber with 8 port manifold	Stoppering chamber	Standard stoppering chamber with 8 port manifold
Freeze Drying Area	0.18m <sup>2</sup>		0.09m <sup>2</sup>	
Tray	4 pcs		3 pcs	
Height Between Trays	70mm			
Cold Trap Temperature	≤-56°C/-80°C			
Cold Trap Capacity	22L			
Cold Trap Size(Dr*H)	Φ270*420mm			
Vacuum Degree	<10Pa			
Water Capture Capacity	6kg/24h			
Tray Size (D*H)	Φ240*18mm		Φ200*18mm	
Freeze Drying Time	24h			
Loading Capacity/Shelf(Liquid)	0.3L			
Total Loading Capacity(Liquid)	1.8L		0.9L	
Drying Chamber Size(D*H)	Φ300*445mm	Φ300*465mm	Φ300*465mm	
Total Qty. Of Vial Φ22	360		270	
Total Qty. Of Vial Φ16	740		555	
Total Qty. Of Vial Φ12	1320		990	
Refrigerant	R134a+R22			
Cooling System	Air cooling			
Consumption	-55°C: 1.4KW, -80°C: 2.1KW		-55°C: 1.8KW, -80°C: 2.1KW	
Power Supply	AC220V/50Hz, 60Hz(single phase), 110V/60Hz(single phase)			
Standard Accessory	Vacuum pump 4L/S, 14.4m <sup>3</sup> /h (for all models), Flasks 100mlx2, 250mlx2, 500mlx2, 1000mlx2 (only for model BK-FD18P/PT)			
Optional Function & Accessory	Tray heating function (for all models), Cold trap defrosting function (for all models), Conical-mouth flask 100ml, 250ml, 500ml, 1000ml (for BK-FD18P/18PT), Wide-mouth flask 600ml, 1000ml (for BK-FD18P/18PT)			
External Size(W*D*H) mm	630*580*970/1430		810*580*950/1410	
Package Size Main Body	780*720*1200mm (165kg)			
(W*D*H)mm / Drying Chamber	400*420*640mm (18kg)			
Gross Weight Vacuum Pump	640*220*410 (25kg)			



## Pilot Freeze Dryer



BK-FD20S



BK-FD30T



BK-FD50S



BK-FD50T/100T



BK-FD100S

### TECHNICAL PARAMETERS

Model	BK-FD20S(Standard)	BK-FD20T(Stoppering)	BK-FD30S(Standard)	BK-FD30T(Stoppering)
Freeze Drying Area	0.24m <sup>2</sup>		0.3m <sup>2</sup>	
Shelf Temperature	-50°C~+70°C		-50°C~+70°C	
Cold Trap Temperature	-80°C		-80°C	
Vacuum Degree	< 10Pa		< 10 Pa	
Water Capture Capacity	6.5Kg/24h		6.5Kg/24h	
Cold Trap Volume	13.5L			
Cold Trap Size (D*H)	Φ240*300mm			
Drying Chamber Size (W*D*H)	470*485*420mm			
Shelf & Tray Size(W*D*H)	Shelf: 305*405*17mm Tray: 300*400*20mm			
Qty. Of Shelf & Tray	Shelf: 2+1, Tray: 2		Shelf: 3+1, Tray: 3	
Sample Loading Capacity (Liquid)	4.5L		7L	
Height Between Trays	145mm		90mm	
Tray Temperature Difference	±1°C			
Refrigerant	R404A + R23			
Condenser Cooling Mode	Air cooling			
Defrost Mode	Electric defrosting			
Stoppering Mode	/	Hydraulic	/	Hydraulic
Total Qty. Of Vial	Φ20mm	468	702	
	Φ18mm	864	1296	
	Φ12mm	1584	2376	
Vacuum Pump	6L/S(22m <sup>3</sup> /h)			
Electric Defrosting Consumption	400W			
Silicone Oil Heating Rods Consumption	400W			
Hydraulic Pressure Station Consumption	/	1.5KW	/	1.5KW
Total Consumption	3KW	4.5KW	3KW	4.5KW
Power Supply	AC220V, 50/60Hz(single phase); AC380V, 50/60Hz(three phase); AC220V, 50/60Hz(three-hase)			
Main Body Weight	340kg		350kg	
External Size(W*D*H) mm	1200*750*1250/1600			
Package Size(W*D*H)mm	Main Body	1200*870*1500 / 310kg	1070*880*1800 / 360kg	1300*880*1500 / 320kg 1300*880*1850 / 400kg
Gross Weight	Vacuum Pump	600*210*410 / 40kg		715*280*315 / 65kg

### TECHNICAL PARAMETERS

BK-FD50S(Standard)	BK-FD50T(Stoppering)	BK-FD100S(Standard)	BK-FD100T(Standard)
0.5m <sup>2</sup>		1m <sup>2</sup>	
-50°C~+70°C			
-80°C			
< 10Pa		< 10Pa	
8Kg/24h		15Kg/24h	
18L		35L	
Φ255*350mm		Φ300*500mm	
470*548*550mm		640*685*550mm	
Shelf: 305*455*17mm		Shelf: 550*480*17mm	
Tray: 300*450*20mm		Tray: 475*272*25mm	
Shelf: 4+1, Tray: 4		Shelf: 4+1, Tray: 8	
8L		16L	
90mm			
±1°C			
R404A + R23			
Air cooling			
Electric defrosting			
/	Hydraulic	/	Hydraulic
1040		2016	
1944		3944	
3456		7020	
8L/S(29m <sup>3</sup> /h)		15L/S(54m <sup>3</sup> /h)	
500W		600W	
800W		1600W	
/	1.5KW	/	1.5KW
7KW	8.5KW	8.5KW	10KW
AC220V, 50/60Hz(single phase); AC380V, 50/60Hz(three phase)		AC380V/50Hz/60Hz(three phase)	
AC220V, 50/60Hz(three-hase)		AC220V/50Hz/60Hz(three phase)	
470kg		730kg	
1200*850*1500/1850		1500*1000*1600/1950	
1250*900*1560 / 472kg	1250*900*1880 / 520kg	1700*1120*1800 / 650kg	1700*1120*1960 / 750kg
715*280*315 / 65kg		715*280*315 / 85kg	



# Platelet Incubator



## FEATURES

1. Power on/off switch, more convenient for operation.
2. UV lamp for disinfection, the interlock function for UV lamp and door.
3. Microprocessor temperature control, high accuracy sensor, LCD display.
4. High efficiency refrigeration system, fast cooling speed and uniformity temperature inside.
5. Double-layer glass observation window, filled with inert gas, to ensure the cooling performance.
6. Audio and visual alarm for high/low temperature, sensor error, power failure, door ajar, low battery.

## TECHNICAL PARAMETERS

Model	BJPX-P10	BJPX-P20
Temp. Range	22±2°C	22±2°C
Temp. Accuracy	±0.1 °C	±0.1 °C
Oscillation	60±5cycles/minute	60±5cycles/minute
Amplitude	50mm	50mm
Trays	5	10
Blood Bags (450ml)	Max.10pcs	Max.20pcs.
Temp. Control	Microprocessor controller	Microprocessor controller
Display	LCD	LCD
Number of Agitator	Single	Single
Refrigerant	R134a, CFC free	R134a, CFC free
Power Supply	AC220±10%, 50/60Hz	AC220±10%, 50/60Hz
Consumption	101W	180W
Internal Size (W*D*H) mm	427*470*467	607*535*657
External Size (W*D*H) mm	540*605*960	720*670*1150
Package Size (W*D*H) mm	620*660*1050	800*725*1240
Net /Gross Weight	98/130kg	110/150kg

## FEATURES

1. Audio and visual alarm for high/low temperature, stalling speed.
2. Stainless steel inner chamber, round angle structure, easy cleaning.
3. UV lamp for disinfection, the interlock function for UV lamp and door.
4. Microprocessor control system, LCD display. RS485 interface for software connection.
5. High efficiency refrigeration system, fast cooling speed and uniformity temperature inside.
6. Double-layer glass observation window, filled with inert gas, to ensure the cooling performance.

## TECHNICAL PARAMETERS

Model	BJPX-P10-II	BJPX-P20-II
Temp. Range	22±2°C	22±2°C
Temp. Accuracy	±1°C	±1°C
Oscillation	60±5cycles/minute	60±5cycles/minute
Amplitude	30mm	30mm
Trays	5	7
Blood Bags (450ml)	Max.15pcs	Max.25pcs
Temp. Control	Microprocessor controller	Microprocessor controller
Display	LCD	LCD
Number of Agitator	Single	Single
Refrigerant	R134a, CFC free	R134a, CFC free
Power Supply	AC220±10%, 50/60Hz	AC220±10%, 50/60Hz
Consumption	180W	250W
Internal Size (W*D*H) mm	400*370*550	450*420*850
External Size (W*D*H) mm	540*570*1070	590*620*1370
Package Size(W*D*H) mm	700*730*1260	750*780*1560
Net /Gross Weight	50/85Kg	90/120 Kg



# Car Refrigerator



CR-18



CR-45

## FEATURES

1. Removable tray for extra storage
2. Environment-friendly cooling, CFC free, low noise

## TECHNICAL PARAMETERS

Model	CR-18	CR-45
External Size(W*D*H) mm	450*320*345	685*400*400
Internal Size(W*D*H) mm	385*205*260	535*270*300
Capacity	18L	45L
Temp. Range	0°C~65°C(ambient 25°C)	5°C~65°C(ambient 25°C)
Material	ABS	PP
Casters	No	2 Casters
Consumption	70W	70W
Power Supply	DC12V/24V, AC110/220V±10%	DC12V, AC110/220V±10%
Package Size(W*D*H) mm	490*350*380	680*430*430
Gross Weight	7kg	9.5kg
MOQ	10 Units	

# Portable Refrigerator



## FEATURES

1. The storage container can keep content cooling up to 24 hours.
2. Insulation material is PU CFC-free polyurethane.
3. Made of environmental PP material, food grade, non-toxic.
4. Storage container is durable for vaccine storage, blood products storage, dry ice storage, frozen specimen storage, etc.



LCX-6L



LCX-12L



LCX-17L



LCX-20L



LCX-33L



LCX-54L



LCX-58L



Ice vessels

## TECHNICAL PARAMETERS

Model	LCX-6L	LCX-12L	LCX-17L	LCX-20L	LCX-33L	LCX-54L	LCX-58L
External Size(W*D*H)mm	340*230*280	420*240*300	460*300*340	440*270*310	570*310*370	615*395*450	615*415*450
Internal Size(W*D*H)mm	226*140*210	330*170*225	350*220*250	375*215*250	450*225*300	510*300*355	510*315*355
Capacity	6L	12L	17L	20L	33L	54L	58L
Temp. Range	2°C~8°C						
Storage Time(Ambient 30°C)	>48h		>24h				
Material	External	PP					
	Internal	PU					
Ice Vessels	6(CMB-400)	6(CMB-400)	2(CMB-1200)	8(CMB-400)	2(CMB-1200)	4(CMB-1500)	3(CMB-1800)
Max. Loading	6kg	8kg	15kg	18kg	25kg	60kg	60kg
Optional Accessory	Thermometer (LCX-17L: Lock and Thermometer)						
Net Weight	1.9kg	1.9kg	3.2kg	3.5kg	3.5kg	7.8kg	8.5kg
Gross Weight	2.5kg	3kg	4kg	5kg	5kg	8.5kg	9kg
Package Size(W*D*H)mm	370*240*290	430*250*310	470*310*350	450*280*320	580*320*380	620*410*460	620*420*460
MOQ	10 UNITS						



# Ice Maker

## Flake Ice Maker



Small particles of irregular snowflake crushed ice



FIM20/30/40/50/100/130/150

FIM60/70/85

FIM200/250/300

### TECHNICAL PARAMETERS

Model	FIM20	FIM30	FIM40	FIM50	FIM60	FIM70	FIM85	FIM100	FIM130	FIM150	FIM200	FIM250	FIM300
Ice Making Capacity(kg/24h)	20	30	40	50	60	70	85	100	130	150	200	250	300
Ice Storage Capacity(kg)	10	10	15	15	25	25	25	25	35	35	55	55	55
Ice Shape	Irregular small granular snowflake crushed ice												
Input Current(W)	180	180	280	280	420	420	420	420	685	685	805	1370	1370
Power Supply	AC220V±10%, 50/60Hz; 110V±10%, 60Hz												
Refrigeration Type	Air cooling												
Tank Shell	Stainless steel												
Compressor / Refrigerant	High efficient and fluorine free/R134a												
External Size(W*D*H)mm	330*503*607	380*543*722	398*543*837				635*611*945			680*641*1102			
Package Size(W*D*H)mm	400*574*655	457*621*770	475*622*886				712*690*994			757*720*1150			
Net Weight	32kg	32kg	40kg	40kg	57kg	57kg	57kg	60kg	62kg	62kg	85kg	91kg	100kg
Gross Weight	36kg	36kg	45kg	45kg	62kg	62kg	62kg	67kg	68kg	68kg	91kg	98kg	106kg
Applicable Area	Various types of experiments, supermarkets, hotels and other seafood products stores etc.												

## Luxury Bullet Ice Maker



Cylindrical bullet ice



LIM15

LIM20/25/50/60/70/80

LIM100/120

### TECHNICAL PARAMETERS

Model
Ice Making Capacity(kg/24h)
Ice Storage Capacity(kg)
Ice Shape
Input Current(W)
Power Supply
Refrigeration Type
Tank Shell
Compressor / Refrigerant
External Size(W*D*H)mm
Package Size(W*D*H)mm
Net Weight
Gross Weight
Applicable Area

## Luxury Square Ice Maker



LIM40-S

LIM80-S

LIM210-S

Square ice

Model	LIM40-S	LIM80-S	LIM210-S
Ice Making Capacity(kg/24h)	40	80	210
Ice Storage Capacity(kg)	15	40	145
Ice Shape	Square ice		
Input Current(W)	380	460	860
Power Supply	220V, 50Hz		
Refrigeration Type	Air cooling		Water cooling
Water input Type	Automatic water tap		
Tank Shell	Stainless steel		
Compressor	Imports of CFC-free		
Refrigerant	R134a	R22	R22
Net Weight(kg)	36	59	75
Gross Weight(kg)	53	74	85
External Size(W*D*H)mm	500*460*790	660*680*890	560*830*1580
Package Size(W*D*H)mm	580*540*860	770*750*920	710*640*630(Head size), 850*630*950(Ice tank size)
Application	Pubs, dance halls, gyms, cold drinks shops, cafes and convenience stores.		

LIM15	LIM20	LIM25	LIM50	LIM60	LIM70	LIM80	LIM100	LIM120
15	20	25	50	60	70	80	100	120
2	5	6	13	25	25	16	55	55
Cylindrical bullet ice								
150	200	240	380	400	400	650	680	750
AC220V±10%, 50/60Hz; 110V±10%, 60Hz								
Air cooling								
Stainless steel								
High efficient and fluorine free/R134a								
300*368*378	330*503*607	380*543*672	548*611*833	500*611*893	500*611*893	635*611*895	680*611*1050	680*611*1050
355*435*425	400*574*655	457*621*720	625*690*882	570*690*945	570*690*945	712*690*944	755*690*1100	755*690*1100
14	26	30	47	50	50	58	70	72
16	30	34	52	55	55	63	78	80
Pubs, dance halls, gyms, cold drinks shops, cafes and convenience stores.								